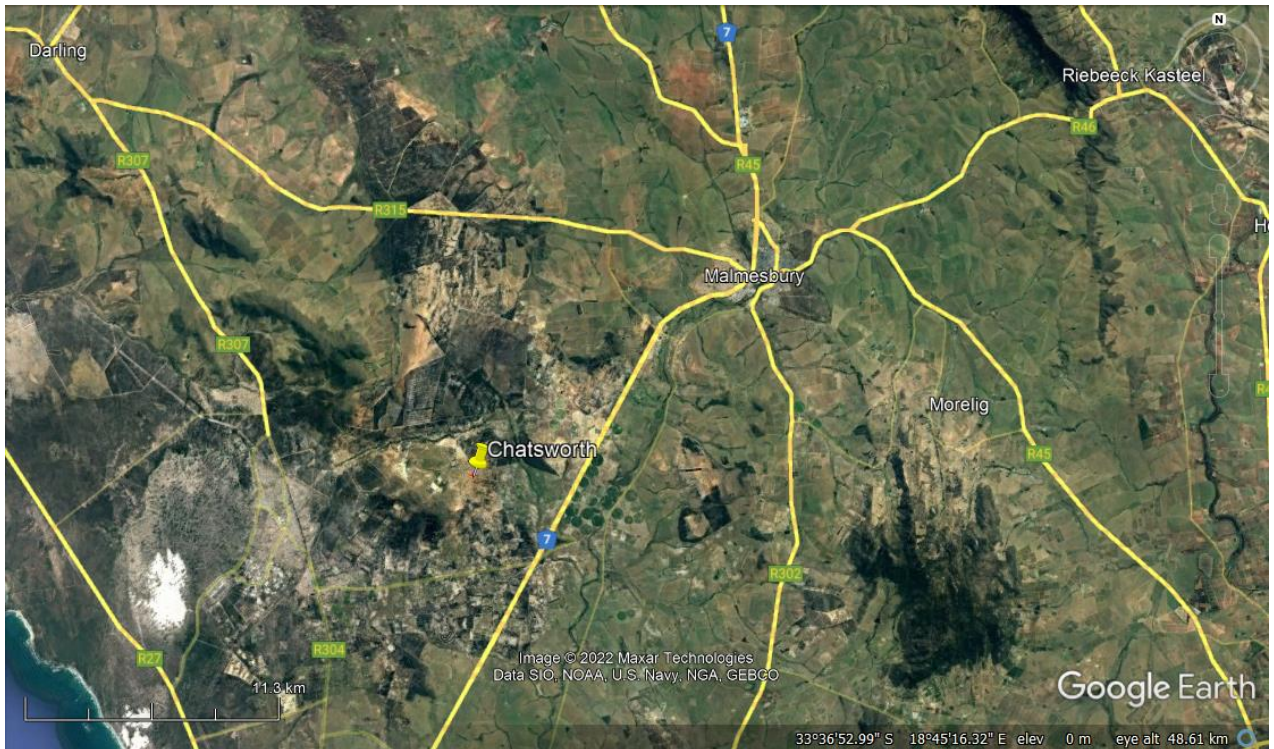
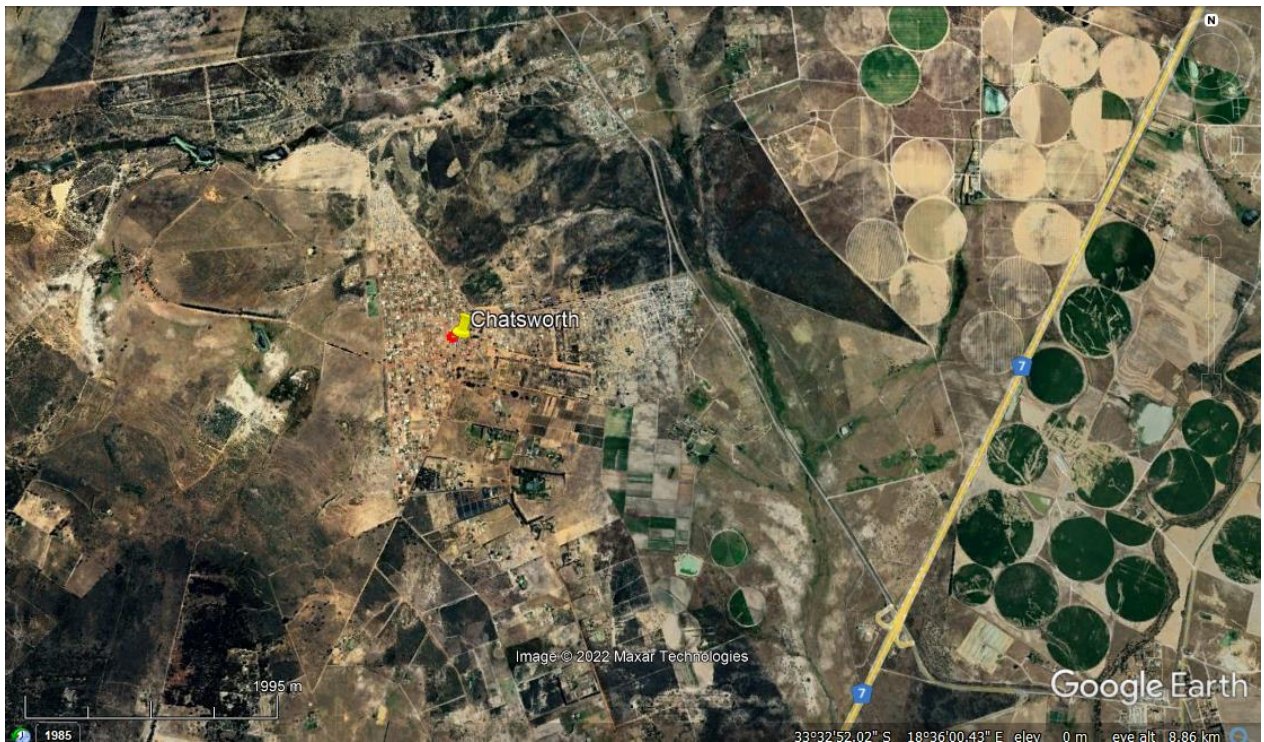


## APPENDIX A – Locality Maps



**Figure 1:** The settlement of Chatsworth (indicated with yellow pin), Swartland Local Municipality is located approximately 16km (as the crow flies) south-west of the town of Malmesbury in the West Coast District Municipality.

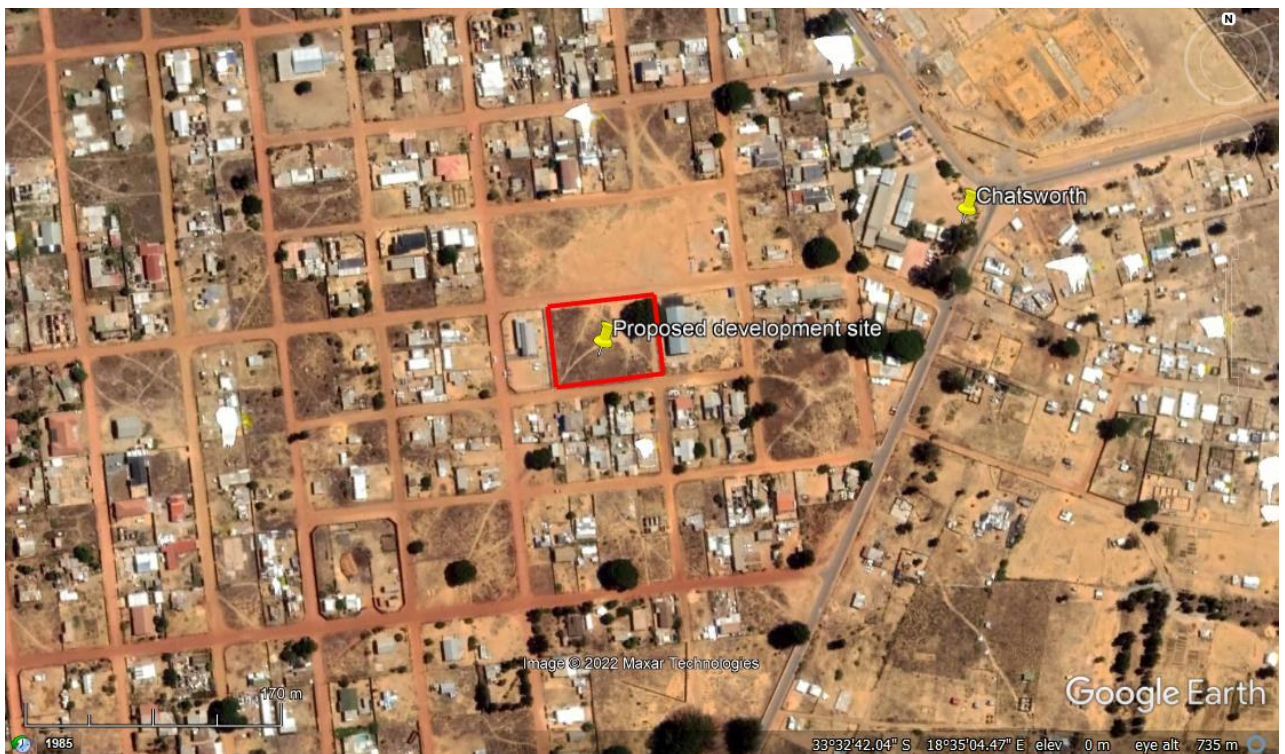


**Figure 2:** The settlement of Chatsworth (indicated with yellow pin) approximately 4,5km (as the crow flies) west of the N7 national highway.





**Figure 3:** Indication (outlined in red) of the proposed filling station and business premises development site on Erf 1071 in the central business district (CBD) of Chatsworth.



**Figure 4:** The proposed development site on Erf 1071 (outlined in red with yellow pin), in Chatsworth CBD indicating the disturbed nature of the site and neighbouring built structures. Access to the property is proposed via existing dirt roads i.e. Third Street to the north and York Street to the south.