

SWARTLAND MUNICIPALITY NOTICE 41/2020/2021
NOTIFICATION TO REGISTER:
PUBLIC PARTICIPATION CONSULTATION PROCESS –

**DEVELOPMENT OF A MANAGEMENT PLAN FOR
SWARTLAND MUNICIPAL PROTECTED AND CONSERVATION AREAS
IN DARLING, MALMESBURY AND YZERFONTEIN**

Competent Authority: Western Cape Department of Environmental Affairs and Development Planning

Members of the public are invited to register for participation in the consultation process for the above proposed project, in terms of Section 39(3) of the National Environmental Management: Protected Areas Act, No. 57 of 2003, as amended and associated regulations.

A management plan aims to guide the development and management of a protected and public conservation area so that it provides:

- goal orientated management of the area;
- a tool for assessing the success of that management;
- a mechanism to review periodically the plan in terms of the assessment
- a mechanism for determining resource requirements and potential expansion opportunities for the protected/conservation areas
- a tool to support proposals for additional resources for the area's effective management;
- a tool for providing the first scoping for any development within the area in terms of the National Environmental Management Act, No. 107 of 1998, as amended and associated environmental impact assessment regulations, as amended (2014)

The Swartland Protected and Conservation Areas' Management Plan will address environmental management issues for specific, identified sites as indicated below:

Darling Sites: Erf No. RE/2271 (Darling Groenkloof Nature Reserve/Darling Veldblomme Nature Reserve);
Erf No. 4369 (Darling Renosterveld Nature Reserve)

Malmesbury Sites: Erf No. RE/327 and Erf No. RE/4847 (Driehoekspad Conservation Area);
Erf No. RE/327 (Klipkoppie Conservation Area)

Yzerfontein Sites: 26 already designated public open space erven within the town

PUBLIC PARTICIPATION:

All interested and affected parties (I&APs) are invited to register (in writing) using the contact details below and/or provide initial comments, queries, concerns or opportunities relating to the proposed project, on or before **Friday, 22 January 2021**.

I&APs should refer to the project name (Swartland Management Plan), and provide their name, address & contact details (*indicating your preferred method of notification*). Please indicate if you have a personal, business, financial or other interest in the process. Please note that future correspondence will only be sent to registered I&APs.

A consultation meeting is tentatively planned for Tuesday, 26 January 2021, subject to the competent authority's COVID-19 protocols in line with the Disaster Management Act, No. 57 of 2002. Meeting details, as well as whether a physical meeting will take place or not, will be confirmed with registered I&APs.

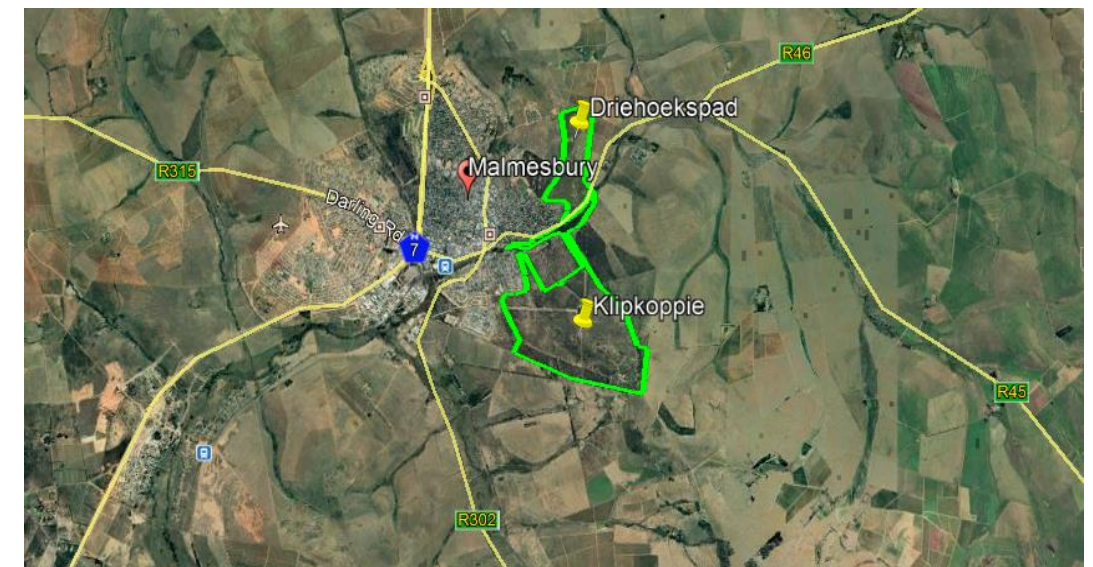
CONTACT DETAILS (to register as an I&AP):

Post: The Municipal Manager, Private Bag X52, Malmesbury, 7299
E-mail: swartlandmun@swartland.org.za
Fax: 022 - 487 9440

DARLING SITES:



MALMESBURY SITES:



YZERFONTEIN SITES:

